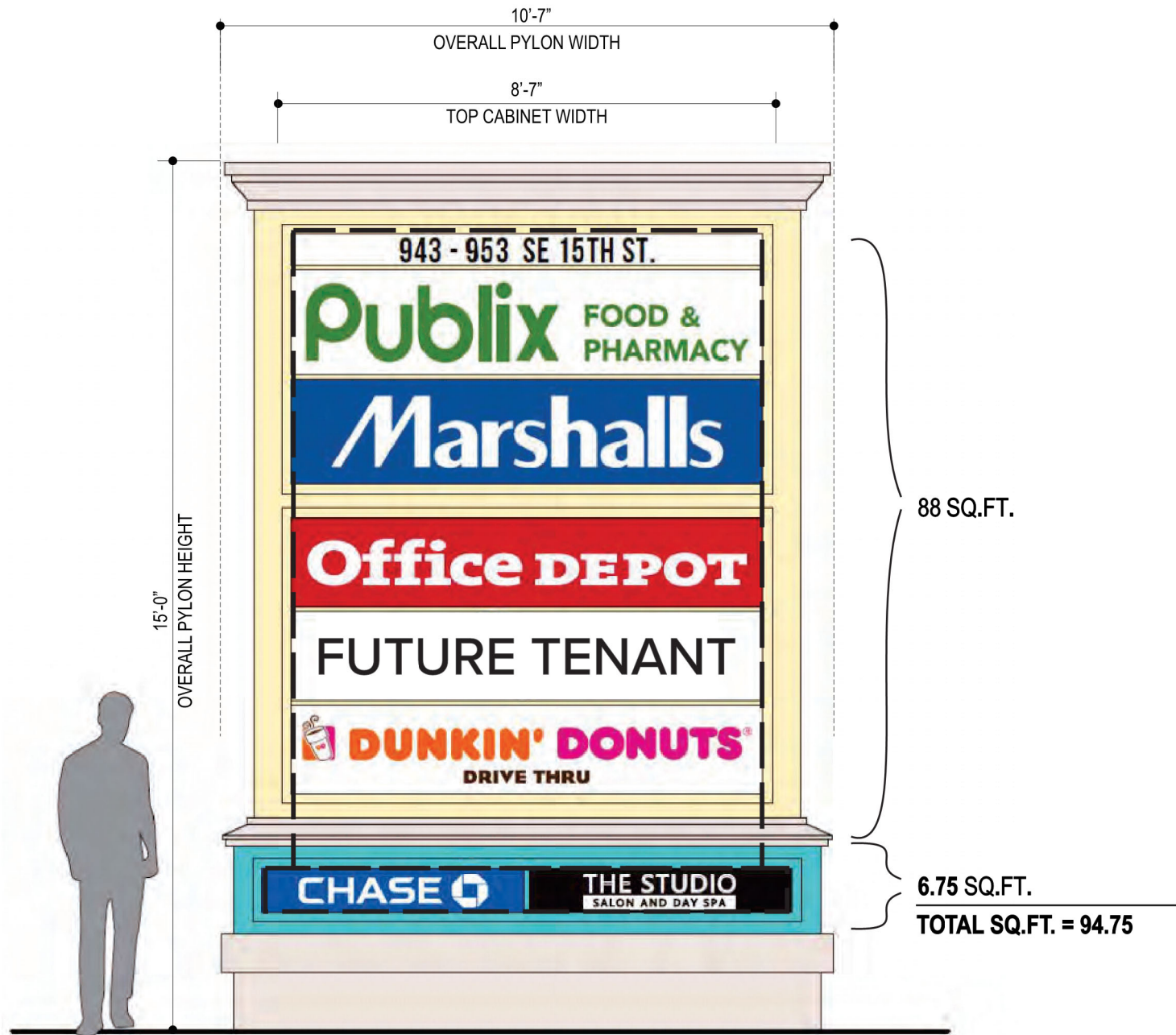


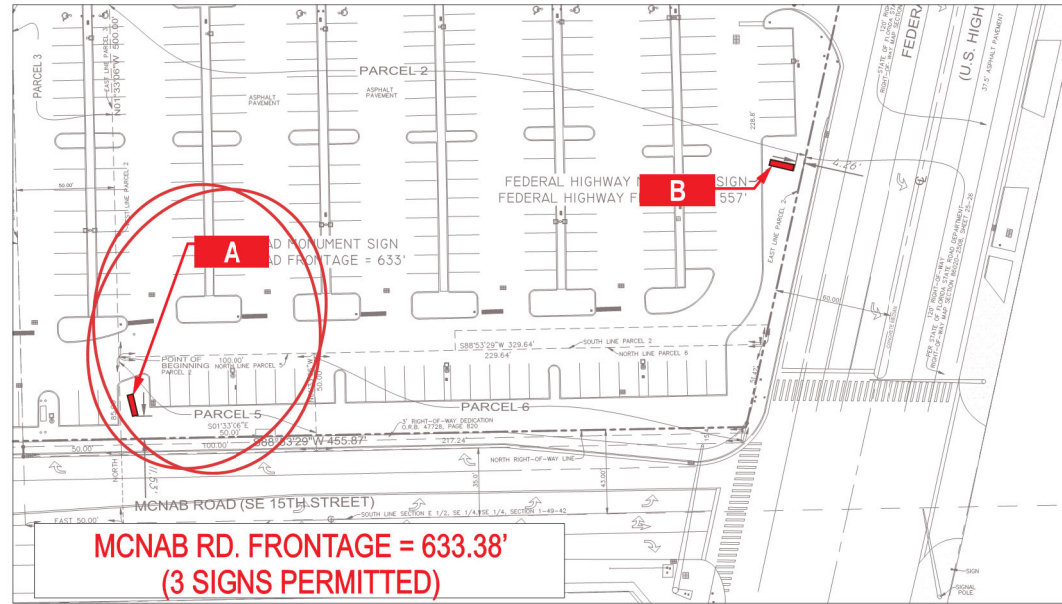
A MAIN SITE ENTRY MONUMENT - E. McNAB ROAD

| Sign Type | Description | Area | Qty. | Existing Sq. Ft. | Allowable Sq. Ft. | Illuminated |
|-----------|---------------|-----------------|------|------------------|-------------------|-------------|
| A | MONUMENT SIGN | 15'-0" x 10'-7" | 1x | 94.75 SQ.FT. | 150 SQ.FT. | YES |

NOTE:
REFERENCE SIGNAGE CRITERIA ON PAGES 2 & 3 FOR ALLOWABLE
LOGOS, FONTS, & COLORS



A ELEVATION DETAIL - E. McNAB ROAD
SCALE: 3/8" = 1'-0"



STREET FRONTAGE = 633' McNAB RD.
PERMITTED NUMBER OF SIGNS = 3x
EXISTING NUMBER OF SIGNS = 1x
PERMITTED MAX SF OF SIGNS = 150SQ.FT (EACH)
314.69 SQ.FT. TOTAL



A VISUAL
SOLUTIONS
COMPANY.

7440 Fort Smallwood Road
Baltimore, Maryland 21226
800.854.0568

| | | |
|---|-------------------|--------------------|
| PROJECT TITLE: ECHO REALTY - POMPANO PLAZA | | |
| ORDER TITLE: ECHO REALTY - POMPANO PLAZA | | |
| CITY POMPANO | COUNTY | |
| STATE FL | CODE ZIP 33062 | |
| DRAWING DATE 06/17/25 | GABLE REP JEC | PROJECT MGR. KL |



ENGINEER OF RECORD SIGNATURE/DATE:

| REVISION HISTORY | | | |
|------------------|------|-----------|-------------|
| NO. | DATE | PREV DRWG | DESCRIPTION |
| | | | |
| | | | |
| | | | |
| | | | |

All designs indicated in these drawings are the property of Gable.
All copyrights reserved. No copies, transmissions, reproductions or
electronic manipulation of any portion of these drawings in whole or in part
are to be made without the express written permission of Gable.

PRODUCT TYPE:
MONUMENT SIGNS

DRAWING TYPE:
COMPREHENSIVE SIGN PLAN

| PROJECT NO. | TASK NO. | QTY. |
|-------------|----------|------|
| 100966 | 264425 | 1x |
| DWG. NO. | SHEET | |
| 14783SR | 7 OF 24 | |

AAC

PZ25-30000002